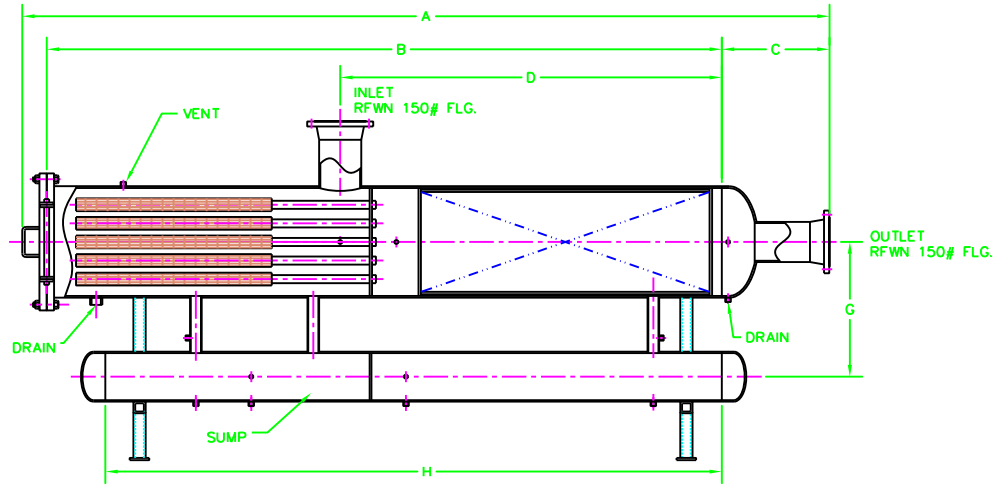
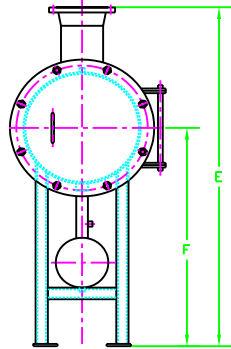


HORIZONTAL FILTER SEPARATOR



Office: 905.696.9292
 Toll Free: 1.877.896.9292
 Fax: 905.696.8046
 www.esscorp.ca
 1565 Britannia Rd. E. Unit 36 & 37
 Mississauga, ON - Canada L4W 2V6

Mod# FSH



MODEL	VESSEL DIAMETER	SUMP DIAMETER	INLET/OUTLET	A	B	C	D	E	F	G	H
FSH6-2F	6 5/8	6 5/8	2"	80	65	12	21	45	34	19	62
FSH8-3F	8 5/8	6 5/8	3"	89	73	13	27	48	35	20	68
FSH10-3F	10 3/4	6 5/8	3"	99	82	14	35	50	36	21	76
FSH12-4F	12 3/4	6 5/8	4"	109	90	15	41	53	37	22	84
FSH16-6F	16	6 5/8	6"	130	106	20	53	61	39	23	96
FSH18-6F	18	8 5/8	6"	136	111	21	59	65	42	25	102
FSH20-8F	20	8 5/8	8"	143	120	21	66	67	43	26	114
FSH24-8F	24	10 3/4	8"	165	138	22	78	73	47	29	126
FSH30-10F	30	10 3/4	10"	189	160	24	99	79	50	32	144
FSH36-12F	36	12 3/4	12"	224	193	26	132	84	55	36	186
FSH42-14F	42	14	14"	260	224	30	150	97	59	40	204
FSH48-16F	48	14	16"	274	238	30	170	102	62	42	222
FSH54-18F	54	16	18"	314	258	34	189	112	67	47	246
FSH60-20F	60	16	20"	343	282	36	210	128	70	50	270
FSH72-24F	72	18	24"	361	288	41	219	135	78	57	276

SPECIFICATIONS

- Design Code ASME Sec. VIII Div. 1
- AVAILABLE MATERIAL: Carbon Steel, SS316/304...
- STANDARD DESIGN RATING: 150 PSIG @ 225 Deg. F, Other on Request
 MIN. DESIGN METAL TEMP:
 -20 Deg. F. @ 150 PSIG, or Per Spec.
- FINISH: Blasted and Painted for CS
 Glass Bead for SS Vessels, or to Meet Spec.
- INLET/OUTLET OPTION: RF Flange, Half Coupling, Other Available on Request
- BOLTS AND HEX NUTS:
 Plated Carbon Steel, or to Meet Specification
- O'RINGS: Buna N or EPDM Standard
 Viton, TEV or other optional
- ASME Code Stamp Available
- Special Coating or High Polish Available on Request

ALL DIMENSIONS FOR REFERENCE ONLY, FOR ACCURATE SIZES REQUEST CERTIFIED DRAWINGS

FILE: FSH