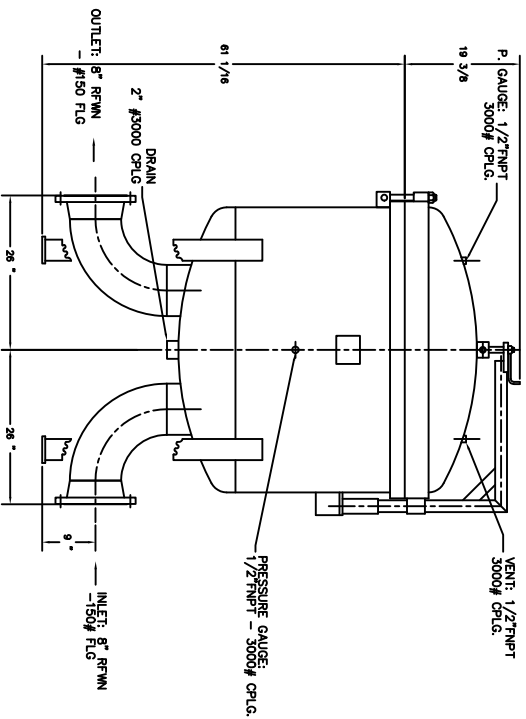
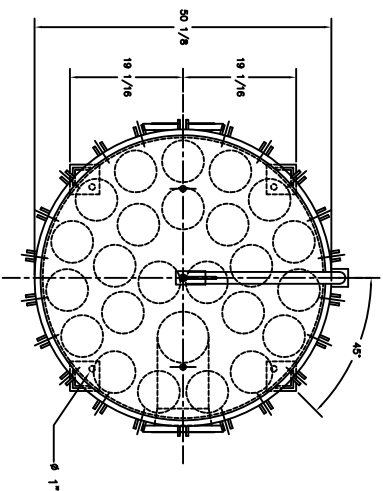


ESS CORP.

MODEL: BG24-L2-8F-CS



SPECIFICATIONS

- MATERIAL OF CONSTRUCTION: CARBON STEEL
- DESIGN CODE: ASME SEC. VIII, DIV. 1, CRN AB
- EXTERNAL SURFACES FINISH: BLASTED AND PAINTED
- INTERNAL SURFACES FINISH: BARE
- COVER "O" RING MATERIAL: BUNA-N
- DESIGN PRESSURE: 150 PSIG @ 250 DEG. F.
- MIN. DESIGN METAL TEMP.: -20 DEG. F. @ 150 PSIG
- BOLTS AND HEX NUTS MATERIALS: PLATED CARBON STEEL
- CONNECTIONS
  - INLET/OUTLET: 8 in. RFWN-150# FLG.
  - PRES. GAUGES: 1/2 in. FNPT-3000# CPLG.
  - VENT: 1/2 in. FNPT-3000# CPLG.
  - DRAIN: 2 in. FNPT-3000# CPLG.
- FILTER BAGS MUST BE ORDERED SEPARATELY
  - SIZE: 7 X 32
  - QUANTITY: 24
- BASKET 3160AK18
  - SIZE: #2
  - QUANTITY: 24
  - MATERIAL: STAINLESS STEEL
- BASKET "O" RING
  - MATERIAL: BUNA-N
  - QUANTITY: 24
- FROM PERFORATED 18 GAUGE PLATE WITH 1/8" DIA. HOLES ON 3/16" CENTRES

NOTES: SPECIFICATION & SIZES CAN CHANGE WITHOUT PRIOR NOTICE. FOR REFERENCE ONLY. NOT TO BE USED FOR PRE-PREPPING WORK. NOT TO SCALE. VESSEL MAY LOOK NOT EXACTLY AS SHOWN. ACCURATE DIMENSIONS ON REQUEST WITH CERTIFIED DRAWING.

NOTES: SPECIFICATION & SIZES CAN CHANGE WITHOUT PRIOR NOTICE. FOR REFERENCE ONLY. NOT TO BE USED FOR PRE-PREPPING WORK. NOT TO SCALE. VESSEL MAY LOOK NOT EXACTLY AS SHOWN. ACCURATE DIMENSIONS ON REQUEST WITH CERTIFIED DRAWING.